

newsletter

August - Sept

BENDIGO FILM SOCIETY

Bendigo Film Society Inc.
Member of the Federation of Victorian
Film Societies A14539Z

www.bendigo.latrobe.edu.au/bfs/
bfs@bendigo.latrobe.edu.au
PO Box 567 Vic 3552
ph 5447 9440
fax 5444 7476

President: Meeuwis Boelen
Treasurer & Secretary: Hilma Hallam
Amelia Bourke, Janette McHugh,
Allan Hercus, Graham Sheckelton

Newsletter August – September
volume 2 issue 4

Editor: Meeuwis Boelen
copy for next issue: 20 September

Where are we going?...

The BFS is now 1.5 year past its near-death experience, and thriving.

Well..., sort-of.

The committee is showing signs of weariness and what is required is another injection of creative minds that ensures another innovative season. Able bodies that are willing to take on some of the menial jobs. And also comments on 2001-02, that keeps the committee inspired.


But, still sleepy after another successful **Mid-Winter Movie Marathon**, I've come to realise that what's mostly needed are members, because it's those that make it worthy for all of us.

Yes, we're in recruiting-mode again. Do take a friend. Do advertise our program at work, and don't forget to come yourself.

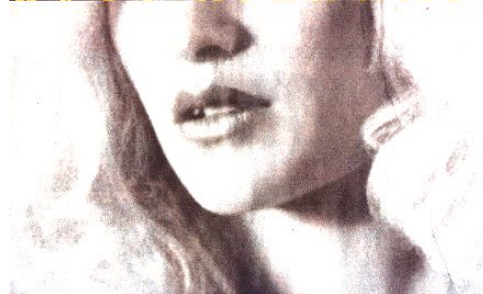
Political Thrillers, **David Lynch**, and a sprinkle of odd, hilarious, and serious fare will see you through the remainder of the 2002 season.



Perhaps discuss this over a (free) glass of wine sometime soon in August.


Happy viewing,
Meeuwis, President BFS. 

LOST HIGHWAY




The Power of Female Sexuality in David Lynch's *Lost Highway*

by Thembi Soddell

The first time I watched David Lynch's *Lost Highway* one line stuck in my mind. Pete walks down a hallway searching for the bathroom. There's blood on his face, he looks pained. We hear *Rammstein*, and crashes resembling thunder. Our vision is distorted, and lights flash in time with the crashes. He opens a door, number twenty-six, and we see a red glow. From this glow emerges Alice's face, but we can only make out her facial features because the room is awash with red. We can't see anyone or anything else in the room, but her movements suggest she's f... 

For a full paper on Lynch's most enigmatic movie, come along and grab a copy of Thembi's essay. Thembi Soddell is in the final year of her BA (Media Studies) at RMIT.

BFS themes, still to come...

David Lynch - *Dune*, *Lost Highway*, *Pretty as a Picture* (documentary);
Political Thrillers - *Die Verlorene*, *Ehre der Katharina Blum*, *Z*, *The Ploughman's Lunch*, *Ill Gattopardo*. 

Members' Benefits

\$8 entry at the **Star Cinema**. Concession at the **Bendigo Cinemas**. Free trial membership with the **Bendigo Library's Music** section. Free entry at the **Heathcote Film Group** and gold-coin entry at the **Castlemaine Film Group**. 5% discount on wine at **Michael's Wine Shop**.

Now is a good time to join.

Sponsors



membership new / renewal

name: _____

(partner: _____)

address: _____

eMail: _____

recruited by: _____



half season \$30
concession \$25
partnered \$45
send a cheque to
PO Box 567 Vic 3552

nl augsep

These Months' Events

Thursday 1 August

7:30 **Chaplin's First Films, 1916**
Lumiere Programme, 1896
News From Home,
 Movietone & Cinesound '46
 8:15 **Elephant Man, Lynch 1980**
 (10:15)

Thursday 15 August ... Wine & Shorts ...

7:30 **15/15 Film Festival**
Newcastle Film Festival
 9:15 **Die verlorene Ehre der**
Katharina Blum (Lost
Honour of KB) Trotta &
 (11:05) **Schlöndorff 1975**

Thursday 29 August

7:30 **Seduction 101, McNamara**
 1996
 8:30 **Experiment in Romance,**
 (10:35) **Sdraulig 1981**
Z, Gavras 1968

Thursday 12 September ... Herbs & Spices ...

7:30 **Teapot Town, 1936,**
Marijuana, 1968, Drugs
and the Nervous System
 8:30 **Beyond LSD 1968**
 (10:45) **Dune, Lynch 1984**

Friday 26 September

7:30 **Naughty Nostalgia, 1988**
 8:45 **The Ploughman's Lunch,**
 (10:30) **Eyre 1983**

Thursday 17 October

7:30 **Lost Highway, Lynch 1997**
 10:00 **Pretty as a Picture, Keeler**
 (11:25) **& Lynch 1997**

Bendigo Film Society Inc.

Venue: Campbell Theatrette in the Bendigo Library, Hargreaves Street.

Some of the movies have not been classified; content may challenge, offend or not be suitable for children.

Membership \$30 2002, \$25 concession, \$45 partnered; 3 months available.

To join, send a cheque or turn up.
 PO Box 567 Vic 3552

The Bendigo Film Society reserves the right to substitute film titles, should the need arise.

Meet the local winners of
 15/15
 and discuss their
 production over a
 glass of local wine



Followed by a
 gem from the
 Newcastle Film
 Festival

That is, if we
 can get the films organised,
 but the wine we have!



the BFS acknowledges
 Michael Bassett, shop 4 in Killians Walk,
 BRIT's Winery Operations and Campespe River
 Estate, for their generous donations of local wines.



DUNE David Lynch, USA 1984. Based on Frank Herbert's cult science fiction novel, "Dune" follows the fortune of Paul Atreides, whose family is persecuted by the Emperor and the evil Baron Harkonnen. Paul and his mother seek refuge in the deserts of the planet Arakis. They join the Fremen who live under the desert sands. Soon the prophecy of a messiah becomes true as Paul leads the Fremen in battle against the forces controlling and manipulating their planet and the precious spice Melange. David Lynch manages to create a sense of the complex dynastical world which Frank Herbert had created in his popular novel, whilst retaining Lynch's love for the bizarre and disturbing.

LOST HIGHWAY David Lynch, USA 1996. Since his success with "Eraserhead" in the early 1980s, David Lynch has developed a reputation as one of the most creative and experimental film artists working in contemporary cinema. "Lost Highway" continues his exploration of the horror film and film noir, in which he uses sound, music and images to convey some of the surreal beauty and terror of dreams. While "Lost Highway" defies easy categorisation, it is a film experience that remains to haunt the viewer, and it is one of the more challenging and consistent of post-modern film works that have attempted to breathe new life into the film noir genre by both celebrating and questioning the conventions of the genre. The film includes a disturbing Goth soundtrack by artists such as Nine Inch Nails, Marilyn Manson (who also appears in the film), David Bowie, Smashing Pumpkins, Rammstein and Lou Reed.



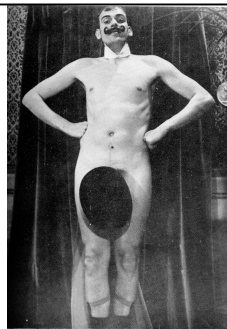
DIE VERLORENE EHRE DER KATHARINA BLUM (LOST HONOUR OF KATHARINA BLUM) Margarethe von Trotta and Volker Schlöndorff, Germany 1975. Katharina Blum has a one-night stand with Ludwig who is, unknown to her, under police surveillance. Katharina then is brought in for police questioning. Her basic civil rights ignored at every turn. As a result she loses her job, her friends, and her standing in the community. The film achieves a compelling portrait of Germany in the mid-seventies, during which the fight against the Red Army Faction led a number of state agencies to use any means possible to fight terrorism. In German with English subtitles.

EXPERIMENT IN ROMANCE Robert Sdraulig, Australia 1981. Clive, an insulated academic, gets a taste of "La Dolce Vita". What happens subsequently is limited only by his imagination. **SEDUCTION 101** Tony McNamara, Australia 1996. Ben and Louise start university and discover the politics of the campus and the politics of sex. A film about political correctness, romance, hypocrisy and human nature.

Z (Z) Costa Gavras, France 1968. One of the most effective political thrillers ever filmed, "Z" is an account of an opposition MP (Yves Montand) of an unidentified Mediterranean country who is murdered before a national election. Jean-Louis Trintignant plays a magistrate whose investigation leads him to uncovering a secret organisation led by the military who are planning a coup-d'etat. Based on the situation in Greece that led to the military junta of 1966, Greek director Costas Gavras (who was in exile from the Greek Colonels) filmed this tense and exciting thriller in France and Algiers. On its release "Z" became an instant cause-celebre as its combination of melodrama, action and suspense elements made it incredibly effective anti-fascist propaganda. In French with English subtitles.



THE PLOUGHMAN'S LUNCH Richard Eyre, UK 1983. Reporter James Penfield makes his money rearranging the facts, a talent he ruthlessly exploits in his friendship and love affairs. A political drama set against the backdrop of the Falkland's crisis, the film takes a wry look at the Government's attempt to justify the war. Set in the heartland of bourgeois England among media creators and academics, the personal, political and historical deceit of Thatcher's Britain is ruthlessly exposed. Features an astonishing climax as the crew and cast filmed undercover during the Conservative Party Conference.



NAUGHTY NOSTALGIA. Three of the earliest known pornographic films of the 1920s era. Each is shown complete with the original title cards, honky tonk music track, vintage automobiles and black stockings and hats of the day.

PRETTY AS A PICTURE: THE ART OF DAVID LYNCH Toby Keeler, USA 1997. Using a behind the scenes look at the production of David Lynch's "Lost highway", this documentary looks at the auteur who brought us "Eraserhead", "Elephant man", "Blue velvet", and the television series "Twin peaks". He discusses his inspiration, impressions of his first film, and his drive for creative expression. Interviews are presented with actors who have starred in Lynch's films, relatives, and production crew.

most movies from, and
 reviews adapted from:
 Australian Centre for the
 Moving Image (CineMedia)

